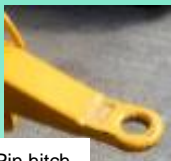


Dimensions: 1.44 mtrs Wide x 3.17 mtrs Long x 1.5 mtrs High

Main Features



- ❑ Ideal solution where plant and equipment require refilling on a regular basis, removing the need for Jerry cans and frequent visits to the filling station.
- ❑ The pump and nozzle combination provides instant 'clean hands' refilling.
- ❑ Inner fuel tank is constructed from translucent heavy duty Polyurethane with 2" filler cap.
- ❑ Manual vent valve top mounted ½ " BSP suction valve and return connections.
- ❑ Pump is a K1 semi-rotary hand pump complete with 15 feet of 1" fuel hose, trigger and nozzle stowed on bracket.
- ❑ Outer tank features hinged lid which is lockable.



Pin hitch type

Please note: this bowser is not road towable

TO BE USED WITH TOWING PIN

Tel: 0800 731 0589
www.tardishire.co.uk

