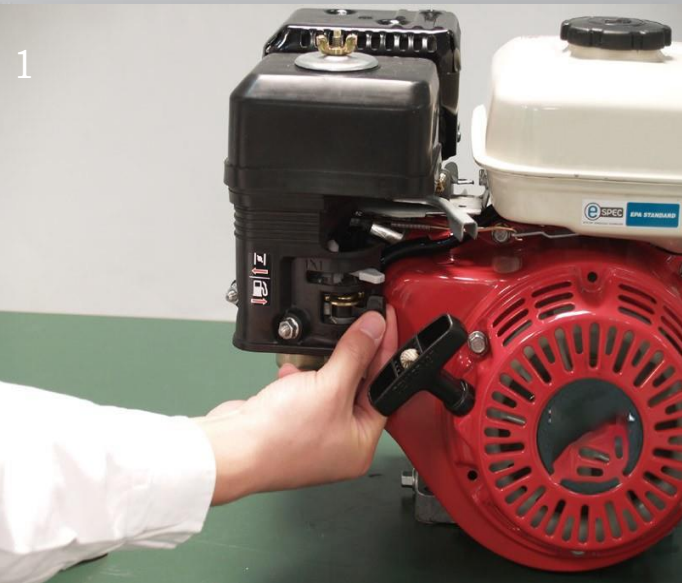


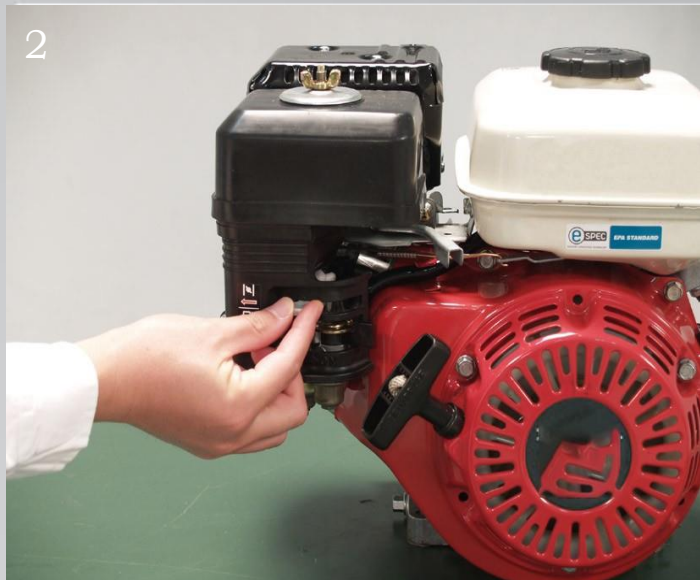
Check the fuel and engine oil level before starting the engine.



1
Turn the fuel valve lever to the ON position.



4
Turn the engine switch to the ON position.



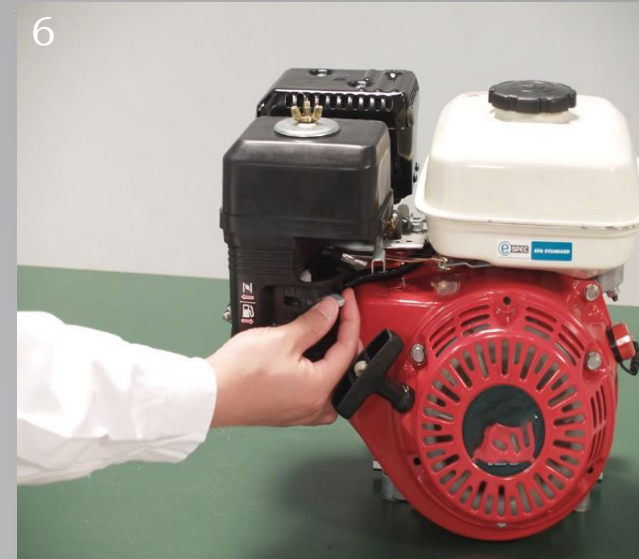
2
Move the choke lever to the CLOSED position.



5
Pull the starter grip lightly until you feel resistance, and then pull briskly.



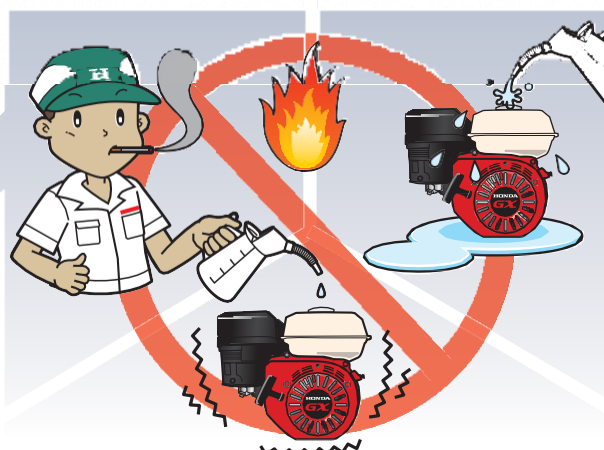
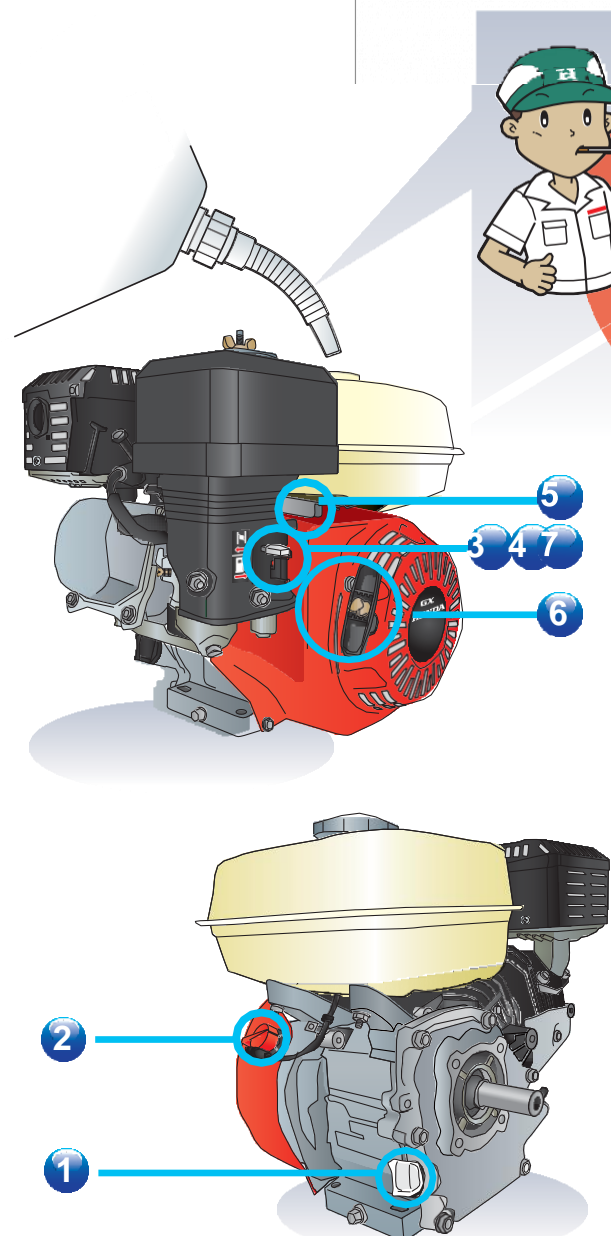
3
Move the throttle control lever slightly to the left.



6
Gradually move the choke lever to the OPEN position as the engine warms up.



Read and understand the Owner's Manual before operating the engine.



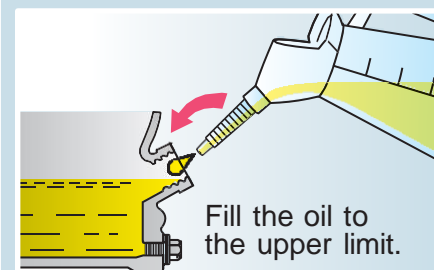
Safety! be careful!

✓ Safety! Be careful!

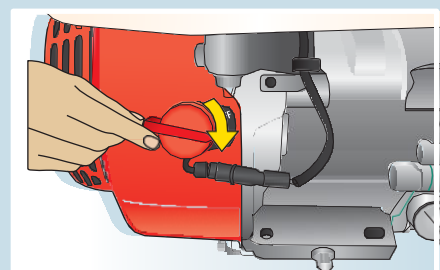
✓ Do not use inside house

How to start

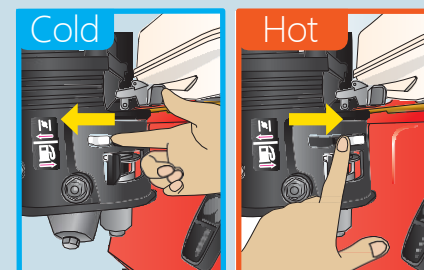
1 Check engine oil



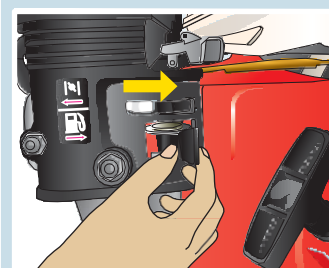
2 Switch ON



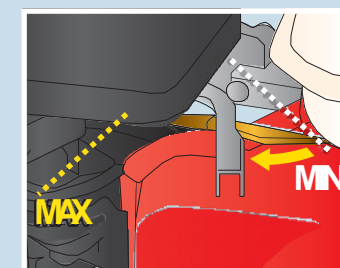
3 Choke ON/OFF



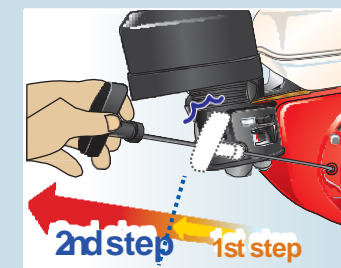
4 Fuel cock ON



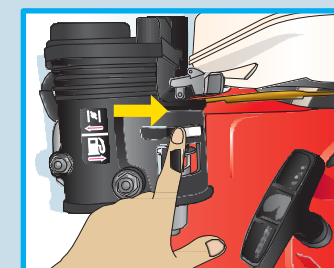
5 Throttle lever



6 Start



7 (Choke off)



How to stop 5 → 2

Fuel

The engines in these pumps are designed to run on E5 PETROL ONLY. Use a stabilizer if fuel will be left in the tank for more than one month after purchase. Replace the fuel after three months. When adding fuel, only fill to the bottom of the filler neck. The inch of air space left in the tank is needed to let the fuel expand when heated up during operation or storage. Make sure the vents in the cap are clean to let air enter the tank as fuel is drawn into the carburettor.

Oil

To get an accurate reading when checking the oil level, wipe off the dipstick and insert it into the filler neck without screwing it in.

Honda recommends oil with an API service category SJ or later. 10W30 will work under most conditions, and SAE 30 can be used at operating temperatures between 50 and 105°F.

To drain the oil, remove the drain plug to the left of the oil filler neck. Use a new sealing washer when reinstalling the drain plug to ensure a tight, leak-free seal.

The engine in the WB20XT holds 0.59 quarts, while the engine in the WB30XT holds 0.61 quarts. When adding fresh oil, it should come up to the edge of the filler neck.

Air Filter

To open the air cleaner box, remove the wing nut on the top of the box followed by the cover washer and air cleaner cover. From there, the filter and grid can be lifted off of the carburettor.

If the air filter is dirty, clean it using a non-flammable solvent or water and a mild detergent. Once dry, soak the filter in clean engine oil and squeeze out any excess.

General running/maintenance advise

Before each use check engine oil level and air filter.

After the first month **OR** 20 hours of operation – change oil.

Every 3 months **OR** 50 hours of operation – clean air filter.

Every 6 months **OR** 100 hours of operation – change oil, check the spark plug, clean sediment cup and, if equipped spark arrester.

Every year **OR** 300 hours – Replace the SPARK PLUG

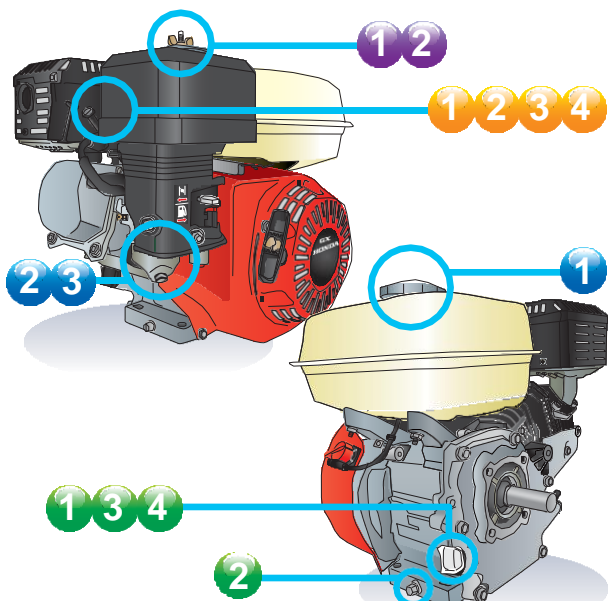
Tardis recommends having the pump professionally serviced every 6 months **OR** 100 hours to clean the combustion chamber, fuel tank, and filter. **AND** every 300 hours to check the idle speed, valve clearance, impeller and pump inlet valve.



Maintenance Schedule

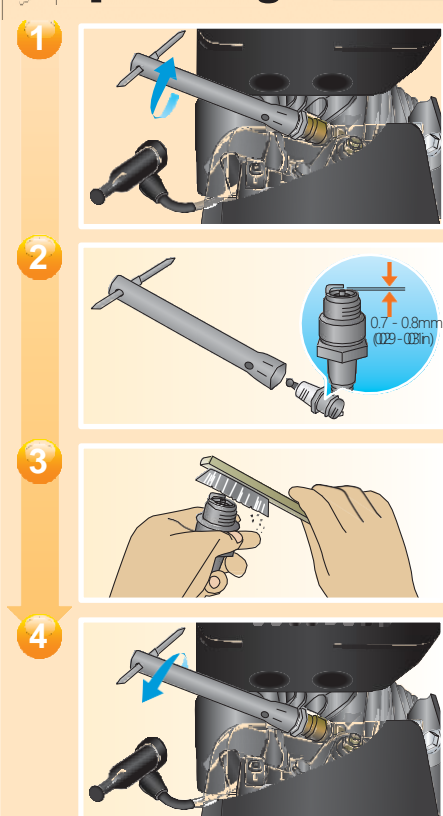
Item	Regular service Period	Before each use	First month or 20-hrs	Every 3 months or 50-hrs	Every 6 months or 100-hrs	Every year or 300-hrs
Engine Oil		check fill/add	replace		replace	
Air Cleaner		check		clean		
Spark Plug					check readjust	replace
Spark arrester (applicable types)					clean	
Fuel filtration cup					clean	
Idle speed						check readjust
Valve Clearance		Take a servicing day	the engine to alter.			check readjust
Combustion chamber			Every 500Hours			
Fuel tank and filter					clean	
Fuel tube			Every 2years			

* Clean the aircleaner when used in dusty areas every 10hours or once a day

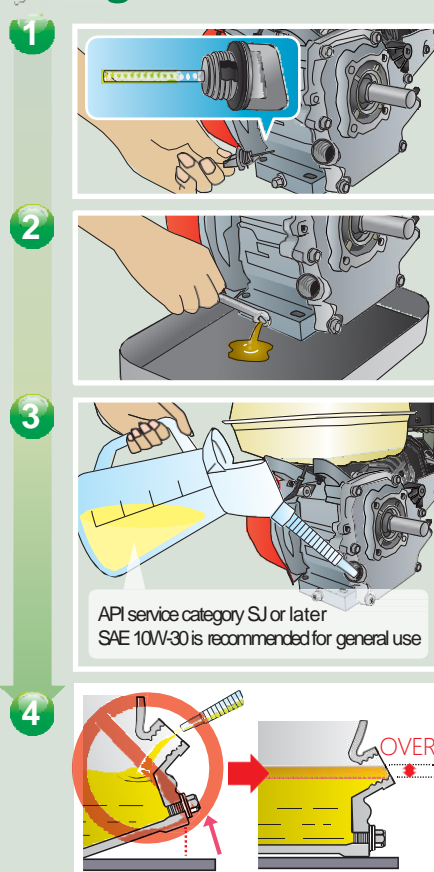


Read and understand the Owner's Manual before operating the engine.

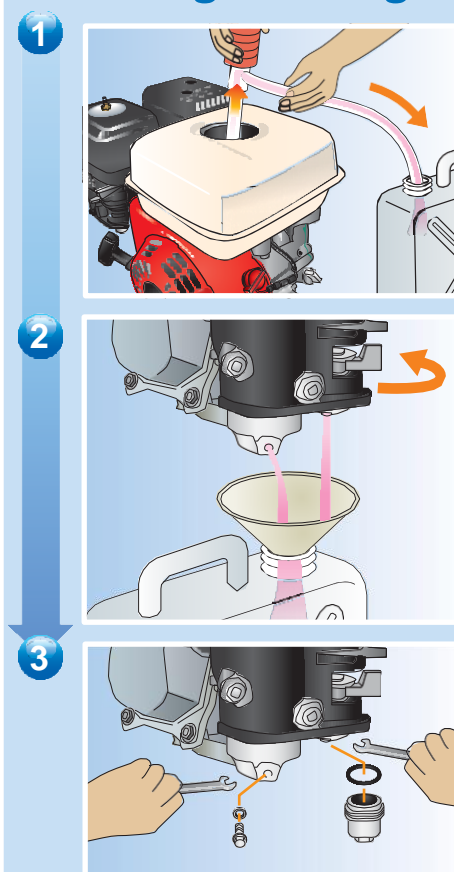
Spark Plug



Engine Oil



Prolonged storage



Air Cleaner Element



Sediment Cup

To clean the cup, set the fuel valve lever to "OFF." Unscrew the sediment cup, located directly below the fuel switch, and remove the O-ring that sits between the cup and the carburettor. Wash the cup in a non-flammable solvent. Place a new O-ring in the carburettor opening and reinstall the sediment cup. Open the fuel valve and check for leaks.

Spark Plug

Remove the spark plug cap and wipe away any dirt. The plug can be removed with a 13/16 inch spark plug wrench. The plug gap should be between 0.028 and 0.031 inches (0.7-0.8 mm.) When installing the plug, screw it in by hand to prevent cross-threading, then tighten it down with the plug wrench. Once the plug seats, turn it another 1/8-1/4 turn if it's a used plug, or 1/2 turn if it's a new plug.

Spark Arrester

These pumps don't come with a spark arrester, but one can be added to meet local fire and safety regulations. Let the engine cool for at least a half hour before handling the muffler.

To access the arrester, first, remove the two 8mm nuts attaching the muffler to the engine. Remove the muffler.

Next, remove the four 5 mm screws from the muffler protector, then remove the protector from the muffler.

Remove the 4 mm screw from the muffler outlet. You can now slide out the spark arrester.

Clean off carbon deposits on the arrester with a wire brush. If there are cracks or holes in the arrester, it needs to be replaced. Reassemble in reverse order.

Hire responsibilities and advice

Pumps on hire require regular maintenance as shown above, it is the customers responsibility to ensure the maintenance is carried out as required. Failure to do so may result in breakdowns therefore requiring a call out by an engineer which would be chargeable to the customer if the maintenance has been adhered to. Tardis will cover any expected wear and tear within a reasonable time scale, but a lack of maintenance may lead to call out charges.

We advise you keep some maintenance parts on site such as Spark Plugs, Oil, filters and correct E10 fuel to adhere to the upkeep of the pump. We can offer these products if required aswell as servicing of your hire item – for a quote call 0800 7310589