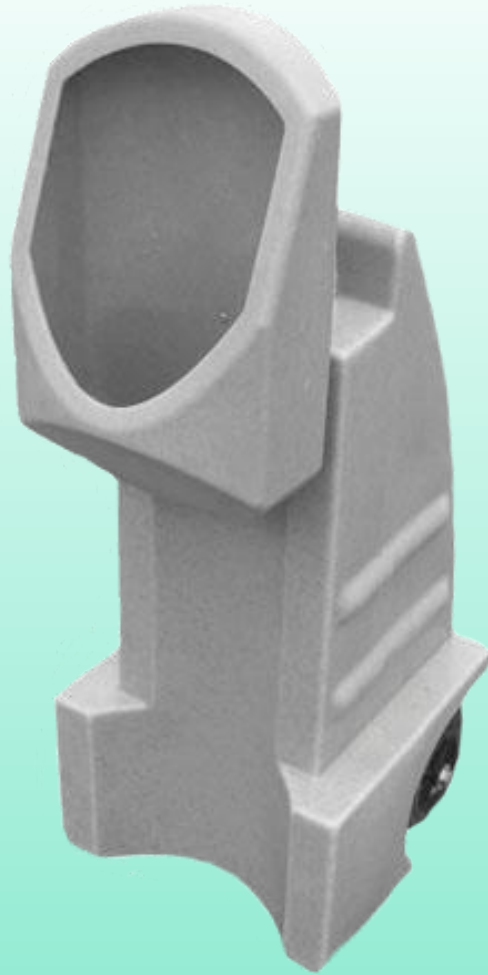


Dimensions: 400mm Long x 400mm Wide x 1060mm High



Main Features

The mobile, wheeled urinal can be easily and quickly set up anywhere, and is easy to clean. This hygienic solution is normally used where waste collection using a service unit is not possible.

Technical Specifications

- Tank Capacity: 45 Litres (150 uses)
- Weight: 9 kg

TPU – APRIL 2018



Tel: 0800 731 0589
www.tardishire.co.uk

